



WHITE HOUSE  
FARM FOUNDATION

WITH  
SUPPORT  
FROM

PLEIN FAMILY FOUNDATION

# 2025 ANNUAL REPORT





Dear Friends of the White House Farm Foundation,

Wow! What a year this was for the White House Farm Foundation. 2025 marked the 15th year since our founding, and the 10th year since Leopold's Preserve was opened to the public. We kicked off the year by developing our 2025-2030 Strategic Plan, which establishes clear goals to guide our continued growth. Other major successes of this year include new volunteer programs, expanded outreach initiatives, two grant-funded projects, and the induction of Leopold's Preserve into the Old-Growth Forest Network.



I am also incredibly proud to share the progress we have made on the historic rehabilitation of the White House. We've been assisting the Plein Family on this project to renovate the building into an educational and interpretive space. When it's complete, the Foundation will be able to lead tours on an invitation basis for students and community groups to share this important piece of Shenandoah Valley history. You can read more about this project and our partnership with the Plein Family on page 13 of this report.

I would like to recognize the continued dedication of our staff; Marie Pinto, Nick Davis, and Eric Sours remain the steady hands behind so much of what we accomplish. In September, we were excited to welcome Ryan McDaniel-Neff to the team as our Communications & Outreach Coordinator. She is strengthening our online presence, managing community connections, and deepening volunteer engagement.

However, none of this work would be possible without you. Our supporters, partners, civic leaders, research collaborators, and volunteers enable us to reach our goals across the region. On behalf of the White House Farm Foundation Board of Directors, thank you for your continued interest in and support of our mission. We look forward to all that lies ahead.

Sincerely,  
*Scott C. Plein, WHFF Board Chairman & President*

# CONTENTS

## 3 About Us

## 5 Stewardship

- 6 Leopold's Preserve
- 7 Trail Maintenance, Powerline Transformation
- 8 Warbler Way
- 9 Internship, Old-Growth Forest Network
- 10 Community Science
- 11 White House Farm
- 12 Trash-Free Cleanup, Invasive Hops Management
- 13 Historic Rehabilitation

## 15 Education & Engagement

- 16 2025 with Bull Run Mountains Conservancy
- 17 Volunteers
- 18 Special Events
- 19 Fall Festival 2025
- 21 Visitation, In the News
- 22 Digital Footprints

## 23 Philanthropy

- 24 Scholarship, Supported Projects
- 25 Partners

## 27 Thank You

# 2025-2030 Strategic Plan

We anticipate continued growth over the next few years, and we sought a guiding framework to help inform future expansion of our programming. Three strategic goals were created with the help of consultant David V. Brotman and a thoughtful synthesis of survey results from our various supporters. The goals outlined in this plan will ensure that we grow in a targeted way that supports our mission and the needs of our community.



# Meet the Team



**Scott C. Plein**  
Board Chairman,  
President



**Marie Pinto**  
Executive  
Director



**Linda Zheng**  
Vice President of  
Finance, Board Secretary



**Aria Zhou**  
Accounting  
Manager



**Nick Davis**  
Leopold's Preserve  
Park Manager



**Eric Sours**  
White House Farm  
Manager



**Ryan McDaniel-Neff**  
Communications &  
Outreach Coordinator



## Board Members

- Eric V. Plein
- Mark C. Plein
- Jackie K. Plein
- Yen Le

Our mission is to enrich individuals with knowledge of and involvement with our natural ecological systems, holistic community planning, and respect for local history and culture.

## Our Approach

We carry out our mission using several key strategies. Though much of our work takes place at our properties, we expand our reach by supporting partners across Northern Virginia and the Shenandoah Valley.

- Stewardship** 
- Education & Engagement** 
- Philanthropy** 

## Our Properties

### White House Farm

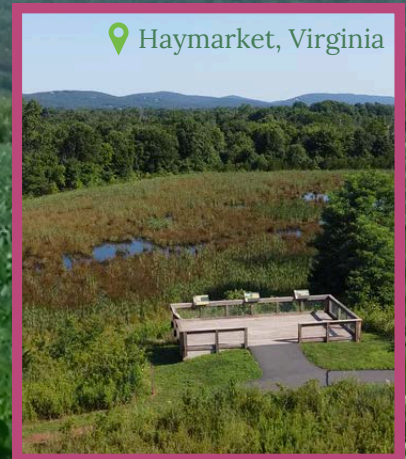
A 270-acre piece of history. This working farm is home to the 1760 "White House" and a 53-acre riparian buffer that protects the South Fork of the Shenandoah River.



Luray, Virginia

### Leopold's Preserve

A 380-acre natural oasis. The Preserve features a 7-mile public trail system that connects thousands of visitors to diverse habitats, scenic overlooks, and historic sites.



Haymarket, Virginia

### About Us

The White House Farm Foundation (WHFF) is a nonprofit 501(c)(3) foundation based in Northern Virginia and the Shenandoah Valley. We are an educational foundation with a focus on conservation of local natural resources. Our work is supported by the Plein Family Foundation.

The ridgeline of Massanutten Mountain as visible from the White House Farm.

# STEWARDSHIP

We are committed to managing natural and cultural resources in ways that benefit local ecosystems and facilitate human connections. Our major stewardship initiatives include native habitat restoration, invasive plant management, maintenance of accessible trail systems, and protection of historic sites.

**4 miles**  
of improved trails

**1,496 iNaturalist Observations**  
across both properties

**181 surveys**  
by community scientists

**\$13,500**  
in grant funding leveraged

**127 acres**  
inducted into the Old-Growth Forest Network

## LEOPOLD'S PRESERVE



Key  
Projects

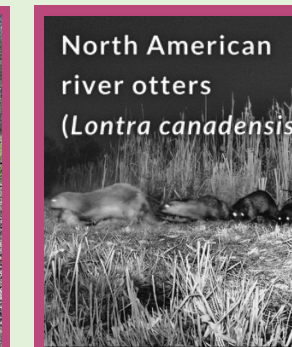
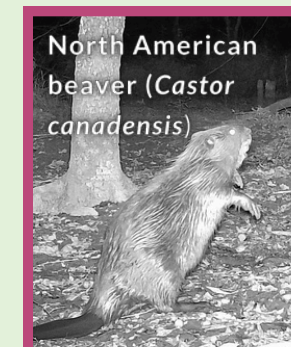
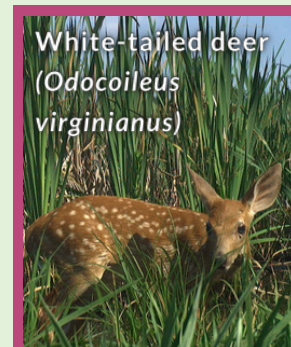
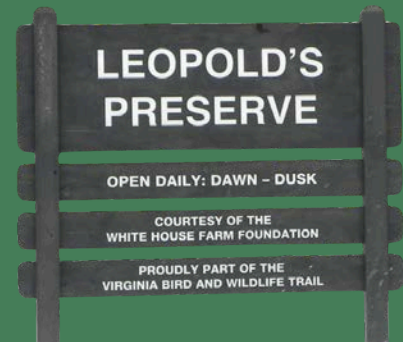
Warbler Way  
(p.8)

Powerline  
Restoration  
(p.7)

Old-Growth  
Forest Inventory  
(p.9)

### At a Glance

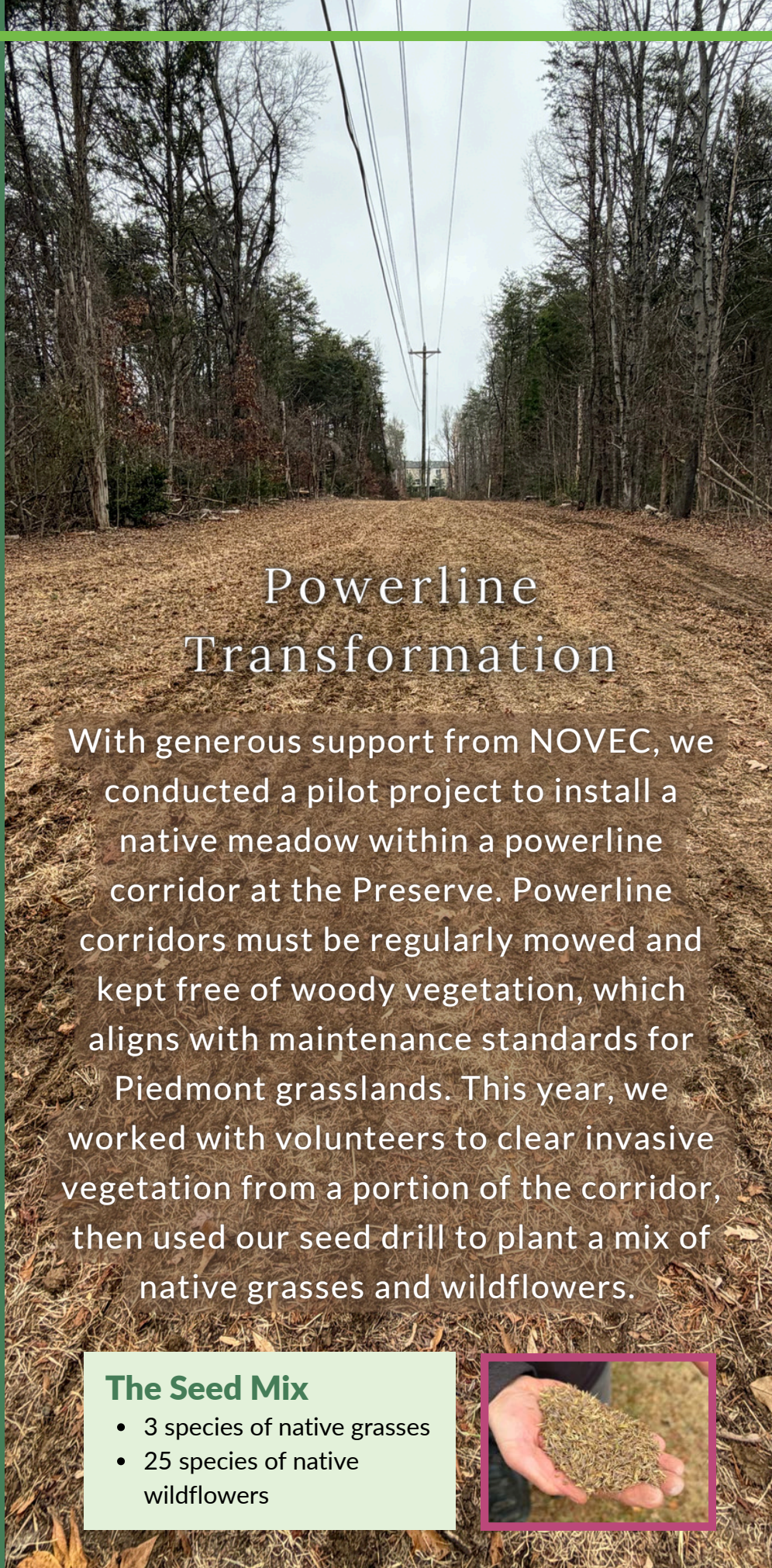
This year, we took on several grant-funded habitat restoration projects at the Preserve, including efforts that capped off long-term invasive plant management initiatives. We also continued making improvements to our 7-mile trail system, designed to increase accessibility and enhance the visitor experience. We are proud to have so many dedicated community volunteers involved in our stewardship projects at Leopold's Preserve.



# Trail Maintenance

Thanks to the generosity of longtime volunteer Frank Jaworski, our team has been able to use a John Deere 3038E tractor and a Woodland Mills WC68 wood chipper this year. This equipment has greatly improved our ability to convert downed trees and brush into trail mulch. With his help, we've resurfaced many trails with wood chips, reducing erosion, muddy areas, and tripping hazards such as exposed roots and rocks.

Special thanks to NOVEC and the Benedictine Sisters of Virginia for donating large quantities of wood chips for our trails. Their contributions are essential to our work.



## Powerline Transformation

With generous support from NOVEC, we conducted a pilot project to install a native meadow within a powerline corridor at the Preserve. Powerline corridors must be regularly mowed and kept free of woody vegetation, which aligns with maintenance standards for Piedmont grasslands. This year, we worked with volunteers to clear invasive vegetation from a portion of the corridor, then used our seed drill to plant a mix of native grasses and wildflowers.

### The Seed Mix

- 3 species of native grasses
- 25 species of native wildflowers



# A Walk Down Warbler Way

Formerly used as a cattle pasture, this 7.5-acre young woodland was badly impacted by early-successional invasive plants. Some of the Preserve's most popular trails wind through this area, so we prioritized it for restoration to prevent the spread of invasive species to new areas of the property. Over the past year, our team has focused on removing key invasive species, selectively thinning dense cedar stands, and improving forest structure. Supported by funding from AARP's Community Challenge Grant Program, we installed native plants and two benches in an area formerly dominated by invasive vines and tree-of-heaven. Dozens of volunteers helped with our planting efforts, which transformed this spot into a scenic and functional part of the local ecosystem.

### Native Plant List

- 14 Ninebark (*Physocarpus opulifolius*)
- 12 Sweet Pepperbush (*Clethra alnifolia*)
- 10 Gray Dogwood (*Cornus racemosa*)
- 10 Red Twig Dogwood (*Cornus sericea*)
- 8 Black Chokeberry (*Aronia melanocarpa*)
- 6 Virginia Sweetspire (*Itea virginica*)
- 6 Winterberry (*Ilex verticillata*)
- 5 Witch-hazel (*Hamamelis virginiana*)
- 4 Eastern Redbud (*Cercis canadensis*)
- 4 Maple Leaf Viburnum (*Viburnum acerifolium*)
- 4 White Fringe Tree (*Chionanthus virginicus*)

Volunteers breaking ground in AARP Community Challenge T-shirts.



Volunteers trimming a cedar stand along Warbler Way to enhance the meadow viewshed.



The plant site for the AARP Grant.

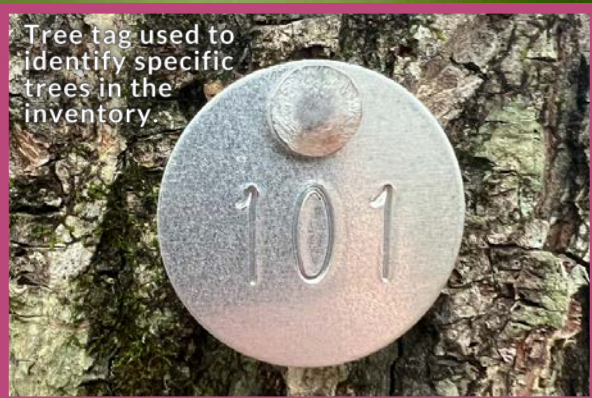
# Field Conservation Internship Program



(From left to right) Abby and Mike Dow (Vice President, Bull Run Mountains Conservancy) measure the diameter of a tree.

Abby Marino, a student at Virginia Tech's School of Natural Resources and Environment, spent the summer with us as our 2025 Field Conservation Intern. She took on the major task of completing a forest inventory of Pinkard Woods, one of the Old-Growth areas of Leopold's Preserve. Her report ([available on our website](#)) outlines the structure of this forest, makes recommendations for forest management, and lays the groundwork for future comparative research projects.

Abby also supported wildlife monitoring and trail maintenance projects during her internship.



Tree tag used to identify specific trees in the inventory.



Abby setting up a trail cam in the Lower Wetlands of Leopold's Preserve.



Inventory of Recently Identified Old-Growth Forest Leopold's Preserve, Prince William County, Virginia

Abby Marino  
Field Conservation Intern  
Wildlife Conservation and Forestry studies, Virginia Tech  
College of Natural Resources and Environment  
Date: August 15, 2025

### Introduction

Leopold's Preserve was recently recognized for containing two distinct tracts of old-growth forest in the Shenandoah Valley. The first tract, located on the south side of the preserve, is a 127-acre tract of old-growth forest that was logged in the early 20th century. The second tract, located on the northeast side of the preserve, is a 127-acre tract of old-growth forest that was logged in the early 20th century. This report provides an overview of the forest's structure and composition, and discusses the importance of preserving these tracts of old-growth forest for future generations.

[Click here to read Abby's report](#)

# Community Science

With the help of trained volunteers, we collect data about wildlife and water quality at the Preserve. This data informs our land management practices and is shared with research organizations that monitor long-term ecological trends across the country.

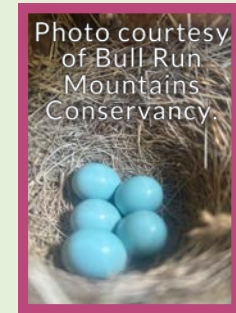
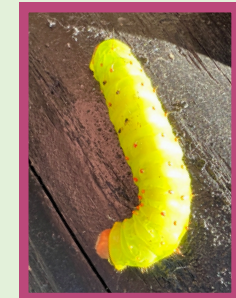


Photo courtesy of Bull Run Mountains Conservancy.

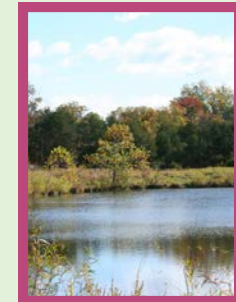
## Bluebird Monitoring

19 surveys were taken across 6 bluebird nest boxes. Data is sent to the Virginia Bluebird Society and then shared with the North American Bluebird Society.



## Caterpillars Count!

127 surveys were taken across 15 tree branches. Data is submitted to the University of North Carolina's Caterpillars Count! program.



## Water Testing

35 samples were taken across 5 test sites. This program is supported by the Prince William Soil & Water Conservation District, which manages all the county's data.

Additional survey projects include purple martin monitoring, wood duck nest box monitoring, and the old-growth forest inventory.

## Wood Duck Breeding Success Across Upper & Lower Wetlands

- Number of Eggs Laid: 166
- Number of Eggs Hatched: 142
- Hatching Success Rate: 86%
- Ducklings Fledged: 130
- Fledgling Success Rate: 91%



Eastern bluebird (*Sialia sialis*) at Leopold's Preserve. Photo by: Mike Cianciosi

## Leopold's Preserve Joined the Old-Growth Forest Network

127 acres of woodland on the south and northeast sides of the property qualified for this recognition. Although these forests were logged in the early 20th century, permanent protections will ensure they develop into true old-growth in the future.



# Key Projects

**Invasive Hops Management**  
(p.12)

**Trash Free Cleanup**  
(p.12)

**Wildflower Meadow**  
(p.11)

**White House Historic Rehabilitation**  
(p.13)

## WHITE HOUSE FARM

### At a Glance

This year at the Farm was marked by a flurry of activity at the historic White House. On top of this exciting project, we continued our habitat restoration initiatives and stewardship of the South Fork Shenandoah River.



### Wildflower Meadow Updates

We're in the midst of a multi-year project to convert the hay field around the White House into a native wildflower meadow that will complement the restored building. Unfortunately, non-native clover and plantain dominated the field this year. Challenges like this are common in habitat restoration, and we're still committed to success. This year, experts from Virginia Working Landscapes and Virginia Forestry & Wildlife Group helped us develop a new plan for 2026.



Volunteers pose for a celebratory photo with the trash collected from the river's edge.

### Trash Free Cleanup

We collaborated with Trash Free Shenandoah, an initiative of Shenandoah Riverkeeper, to host an Earth Day cleanup at the Farm. Spring floods had deposited huge piles of trash along the river's edge, and volunteers worked hard to remove all of the debris. In the end, we collected 26 bags of trash and 22 tires!



(From left to right) Scott Plein (Board Chairman & President, WHFF), Eric Sours (White House Farm Manager, WHFF), Brian Morse (Principal Wildlife Biologist, Virginia Forestry and Wildlife Group), and Eric Plein (Board Member, WHFF) discuss future management of the native wildflower meadow at the White House Farm.

### Invasive Hops Management

One of the biggest management challenges at the White House Farm is invasive Japanese hops, which frequently establishes along riverbanks. This year, we targeted two badly infested areas with mechanical and chemical control methods.

Japanese hops (*Humulus japonicus*)



# Historic Rehabilitation

Our namesake White House is an iconic Page Valley landmark. Vacant since the mid-20th century, the White House has suffered structural damage from floods, insects, and erosion, making it unsafe to enter. In late 2024, the Plein Family initiated a large-scale historic rehabilitation of the White House. When complete, the building will be an interpretive center where visitors can learn about its three main periods of occupation and gain a deeper appreciation of local history.



The White House in July 2025, before renovations begin.



The White House in December 2025, after 5 months of renovations.

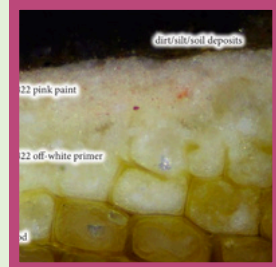
\*What is paint analysis? This scientific process is used to identify the color and composition of surface finishes in historic buildings. Microscope analysis can reveal different layers of paint applied over time. Photo courtesy of Amelia B. Jensen, Conservator and Paint Analyst.

## 2025 Progress



### February

Condition assessment by architect and structural engineer.



### July

Paint analysis\* completed for interior paint schemes.



### August

Renovations on the house officially begin.



### October

Modern metal roof replaced with period-appropriate cedar shake roof.



### November

Final coat of exterior plaster applied.

The White House in September 2025 during the beginning stages of the new plaster installation. Photo by: Jenni Massie, Urban Development Partners.

# EDUCATION & ENGAGEMENT

Education is at the heart of our mission. This year, we continued to offer high-quality educational programs at both Leopold’s Preserve and the White House Farm, including guided hikes, field trips, homeschool classes, and more. Beyond structured learning, we also offered many opportunities for community volunteers to participate in hands-on conservation projects. We are so grateful for their ongoing support of our work.

**82 Programs**  
provided in 2025

**1,539 Participants**  
reached during programming

**1,573 Hours**  
worked by volunteers

**2,459 Impact Hours\***  
across all programming

\*What is an impact hour? We multiply the number of attendees by program length to derive “impact hours,” which represent the total engagement time across all individual participants.

## 2025 with Bull Run Mountains Conservancy

Our long-term partnership with the Bull Run Mountains Conservancy (BRMC) has been key to our success at Leopold’s Preserve. This year, we continued offering a broad array of educational and volunteer programs aligned with both our missions. Thank you to the entire BRMC team!



The critters of the 25th annual Halloween Safari pose for a photo before the night of fun begins.



Matthew Frost (Assistant Director, BRMC) leads a Hike with a Naturalist program.



Summer campers look for amphibians at Leopold’s Preserve. Photo courtesy of BRMC.

### BRMC & WHFF in 2025

- 20 Homeschool Programs
- 8 Hikes with a Naturalist
- 12 Naturalist Walks
- 4 Winter Lectures
- 2 Halloween Safari Nights
- 1,406 Total Impact Hours



Michael Kieffer (Executive Director, BRMC) leads a “Birds and Blooms” Homeschool Program.

# Volunteers

Since its inception in 2022, we have continually been blown away by the enthusiastic volunteers at Leopold's Preserve. This year, we grew our volunteer opportunities with new programs like our "Third Saturday" workdays and our independent Trail Ambassador program. We also continued working with community partners, including local Scout troops, churches, and businesses, to offer group volunteer activities. Thank you to everyone who volunteered with us this year!



(From left to right) Mike Dow (Vice President, BRMC), Matthew Frost (Assistant Director, BRMC), Nick Davis (Leopold's Preserve Park Manager, WHFF), and volunteers Marcia Richter, Becky Stater, Gary Richter, Steven Franklin, Nasir Pooyan, and Pouran Azari pose for a photo before one of our weekly Friday Conservation Corps workdays.



Youth volunteers building a wood duck box.



Cub Scout volunteer pulling invasive Garlic Mustard (*Alliaria petiolata*).



A volunteer directing traffic at the 2025 Fall Festival.



Volunteer planting witch-hazel (*Hamamelis virginiana*).

# 2025 in Volunteering

**50 Volunteer Workdays**  
Volunteers focus on habitat restoration and trail maintenance.

**115 Trail Reports**  
Trail Ambassadors submit reports on trail conditions and hazards to our staff.

**157 Unique Volunteers**  
New and returning volunteers made an incredible impact.

**\$54,715.97 Value**  
1,573 hours worked by volunteers multiplied by the hourly rate of \$34.79.

## Field Trips

We host field trips at both Leopold's Preserve and the White House Farm, with a focus on hands-on learning. Students often contribute to our habitat restoration or data collection goals during their visits.

# Special Events



Photo courtesy of Bishop's Events.

## 2025 Trail Race

In partnership with Bishop's Events, we host an annual 5K/10K trail race at Leopold's Preserve. This event connects community members with local outdoor recreation.



## Butterfly Surveys

Volunteers support butterfly surveys at the White House Farm, with data sent to the North American Butterfly Association to aid their nationwide research. This survey is conducted annually on the first Saturday in July.



## Wildlife Releases

Animal Education & Rescue Organization (AERO) frequently releases rehabilitated wildlife at Leopold's Preserve. Participants get a chance to see wildlife up close and learn how to reduce human-wildlife conflicts at these public events.



Kindergarteners from Highland School visited Thoroughfare Meadow at Leopold's Preserve to observe and learn about the life cycle of monarch butterflies.

# Fall Festival 2025

Hosted in partnership with our friends at the Northern Virginia Conservation Trust (NVCT), the second annual Fall Festival at Leopold’s Preserve was another resounding success. With an estimated 200 community members in attendance, the Festival’s atmosphere was buzzing with activity. Local nonprofit organizations set up tables lining Wood Duck Way’s accessible trail, offering interactive games and crafts for families to enjoy. Attendees also connected with five local businesses focused on conservation and sustainability. It was great to see several local leaders in attendance, including Prince William County Supervisor Tom Gordy and Haymarket Town Council Member Joseph Pasanello. Thank you to everyone who supported this event!



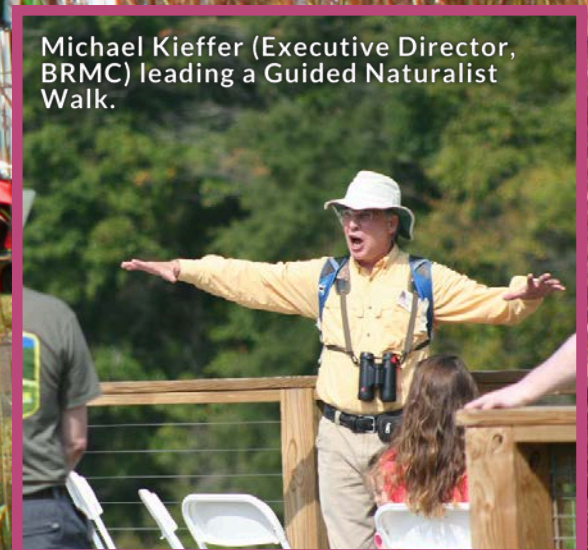
Visitors learning about Virginia wildlife at the Virginia Outdoors Foundation’s table.



Lisa Matthews (volunteer) engaging with a visitor at the WHFF table.

**Festivities**

- Top of the hour Guided Naturalist Walks along Wood Duck Way.
- Themed raffle items awarded every half hour, including trekking poles, a bird feeder, and face painting.
- Five vendors, including a cotton candy stall, native plant nursery, and refill boutique.
- 20 nonprofit partners promoting their missions.



Michael Kieffer (Executive Director, BRMC) leading a Guided Naturalist Walk.

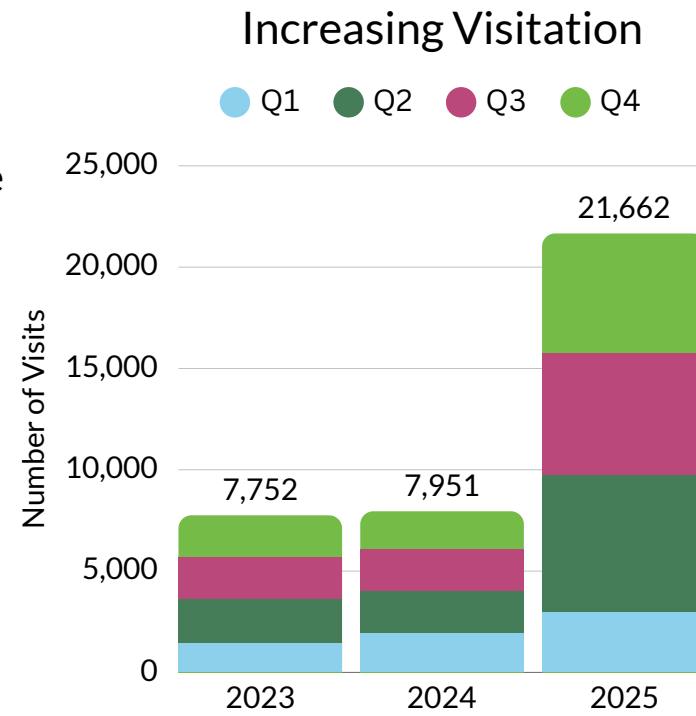
Partners, sponsors, and vendors stationed along Wood Duck Way. Photo courtesy of the Northern Virginia Conservation Trust.

# Leopold's Visitation

We are committed to providing high-quality, publicly accessible green space in our region. A major way that we realize this commitment is by maintaining the 7-mile trail system at Leopold's Preserve, which is free to access and open to the public daily.

We track visitation by counting the number of vehicles that enter our parking areas, then applying a 1.7 person-per-vehicle multiplier.

Previously, our staff counted vehicles by sight, which resulted in missing data during weekends and peak work hours. In spring 2025, a software update to our security cameras enabled automatic tracking of all vehicles, greatly improving the accuracy of our data. This explains the sharp increase in observed visitation for 2025.



What is a visit? A "visit" is the entry of a person into Leopold's Preserve. It is not the same as a visitor. A single visitor can generate multiple visits by coming to the Preserve more than once.

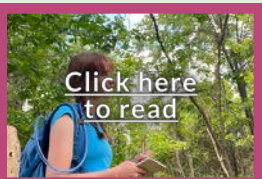
## In the News



**WHSV3** The White House rehabilitation project garnered interest from several prestigious news outlets, including WHSV3. Their story, which aired during primetime news, highlighted the building's historic significance and featured interviews with WHFF staff and local archaeologist Dr. Carole Nash. Photo from WHSV3 program.



**Page Valley Livin'** The White House rehabilitation was also featured in Episode 88 of Page Valley Livin', a YouTube series coordinated by Page Valley News. During the 25-minute episode, WHFF staff offered a detailed look at logistical and historic aspects of the rehabilitation project. Photo from Page Valley Livin' Episode 88.



**Virginia Tech News** Our summer conservation intern, Abby Marino, was spotlighted in an article published by Virginia Tech News, "Student finds her calling in conservation." Among her other achievements, the article features the work Abby did to inventory old-growth forest at Leopold's Preserve during her internship with WHFF.

# More from '25



We gave a presentation at the Chesapeake Watershed Forum highlighting the Preserve.



Eagle Scouts installed two new benches and five new bluebird boxes at the Preserve.

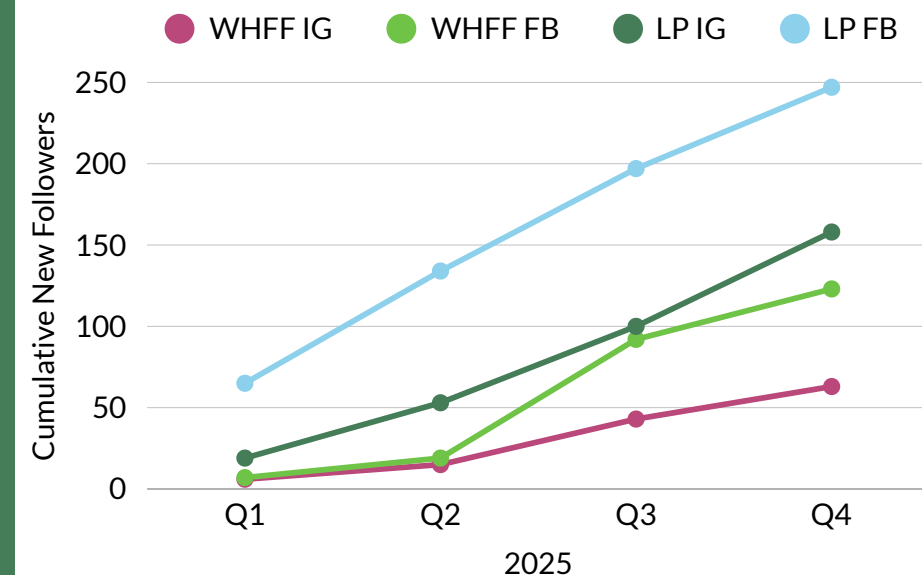


We hosted the Northern Shenandoah Valley Master Gardeners for a Farm tour.

# Digital Footprints

In the ever-evolving age of technology, we continue to expand and improve our digital outreach strategies. In 2025, we sent 19 email campaigns to nearly 1,250 subscribers, including monthly event announcements and publication updates. We run Facebook (FB) and Instagram (IG) pages for both WHFF and Leopold's Preserve (LP). All four accounts saw follower growth and increased engagement, including likes, comments, and shares, in 2025. Our weekly #TrailCamTuesday posts on the Leopold's Preserve pages continue to be a fan favorite, often reaching over 1,000 views across both platforms.

## Social Media Follower Growth in 2025



Data from Meta Business Suite Insights

# PHILANTHROPY

The White House Farm Foundation can't be all things to all people - nor do we strive to be. To broaden our impact across the region, we share resources with partner organizations that are doing specialized and impactful work in the realms of conservation, land management, and education. We also proudly administer the Plein Environmental Scholarship Fund, which supports the next generation of environmental leaders.

**\$25,000**

given through the Plein Environmental Scholarship

**27 Partners**

supported with cash donations

**4 Partners**

supported with in-kind contributions\*

**30 Event Co-Hosts**

that provided meaningful programs across both properties

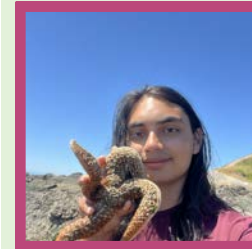
\*What is an in-kind contribution? An in-kind contribution is a non-monetary donation of goods, services, or property, rather than cash, that is given a fair market value.

## Plein Environmental Scholarship

Funded by the Plein Family Foundation, this scholarship provides support to undergraduate students studying environmental topics at public institutions in Virginia. We're proud to have awarded scholarships to students in many diverse fields, from civil engineering to dairy science to finance to forestry. In 2025, we were excited to support three new students.



**Ayla Janney**  
Virginia Tech  
Dairy Science



**Savara Shrivastava**  
College of William and Mary | Biology, Environmental Sciences



**John Daniel Trias**  
Northern Virginia Community College  
Civil Engineering

## Supported Projects

### Science in the Park

Through the Prince William Parks Foundation, we support immersive, SOL-aligned field trips for local Title 1 schools. Curriculum focuses on conservation, ecology, watersheds, and soils, and is delivered at three Prince William County Parks.

### Ducks Unlimited Greenwing Program

The Greenwing Program focuses on youth involvement in conservation. Through our partnership with Virginia Ducks Unlimited, we offer annual events at Leopold's Preserve where children can get hands-on experience constructing nest boxes and making habitat improvements to benefit native waterfowl.

### Grassland Biodiversity Surveys

We are proud to partner with Virginia Working Landscapes, a program of the Smithsonian that promotes conservation and sustainable land use. Their grassland biodiversity surveys are essential to understanding how private land management strategies affect native species in our region.



# Partners

Partnerships exemplify our philanthropic strategy. We strive to support all of our partners in multiple ways - not only through financial donations, but by sharing access to our properties, sharing equipment, or sharing staff time and expertise. In 2025, we continued to support these multi-year partners:

- Aldo Leopold Foundation
- American Horticultural Society
- Animal Education & Rescue Organization
- Alliance for the Chesapeake Bay
- Baltimore Tree Trust
- Bay Journal
- Bull Run Mountains Conservancy
- The Clifton Institute
- Earth Sangha
- Friends of the Blue Ridge Mountains
- Goose Creek Association
- Human-Beaver Coexistence Fund
- Northern Virginia Conservation Trust (NVCT)
- Potomac Riverkeeper Network
- Prince William Conservation Alliance
- Prince William Parks Foundation
- Prince William Wildflower Society
- South River Watershed Coalition
- Virginia Bluebird Society
- Virginia Native Plant Society
- Virginia Working Landscapes



(From left to right) Charlie Grimes (Chair, Greater Prince William Trails Coalition), Scott Plein (Board Chairman & President, WHFF), Alan Rowsome (Executive Director, NVCT), and Marie Pinto (Executive Director, WHFF) mingling before the Leopold's Preserve Old-Growth Forest Ceremony.

# New Friends

We are always seeking to grow our network of partners. This year, we forged new partnerships with these great organizations:

- Alliance for the Shenandoah Valley
- Ducks Unlimited - Virginia
- Fairfax Invasive Removal Alliance
- Old-Growth Forest Network
- Prince William County Schools
- Virginia Conservation Network



Purple milkweed (*Asclepias purpurascens*) in Thoroughfare Meadow at Leopold's Preserve.



# THANK YOU!

We could not have achieved our goals this year without your support. We would like to acknowledge the following individuals and organizations who have played a significant role in realizing the White House Farm Foundation's mission:

## EDUCATIONAL & GOVERNMENT INSTITUTIONS

- Alternative Paths Training School
- Blue Ridge Community College
- George Mason University
- Highland School
- James Madison University & Dr. Carole Nash
- Prince William Parks and Recreation
- Prince William County Public Schools
- Sheridan School
- Smithsonian-Mason School of Conservation
- Town of Haymarket
- Virginia Cooperative Extension
- Virginia Department of Forestry

## VOLUNTEERS

### 10-19 Hours

- Amy Scala
- Arul Siripurapu
- Jon Hinkle
- Kheya Siripurapu
- Lauren Boyle
- Natalie Buford
- Robert Vullo
- Steve Daly
- Steven Franklin

### 20-39 Hours

- Gracie Supernaugh
- Jill Reddick
- Mary Shatzer
- Nora Waide

### 40-70 Hours

- Frank Jaworski
- Gary Richter
- Kyoung Kim
- Kim Teitelman

## BUSINESSES

- Bluebird Design
- Bishop's Events
- Commonwealth Preservation Group
- Ewa's Cotton Candy
- Fillagreen
- Frazier Associates
- Micron Technologies
- Seven Bends Nurseries
- Urban Development Partners
- Wild Birds Unlimited

### 90-130 Hours

- Nasir Pooyan
- Pouran Azari
- Ariel Stater

### 240+ Hours

- Becky Stater
- Marcia Richter
- Mike Dow

## GRANTMAKERS & DONORS

- AARP
- Benedictine Sisters of Virginia
- Edward Milhous
- Frank Jaworski
- Howard Miller
- Huong Van
- Juliette Muscat
- Knepley-Song of Brooklyn Fund
- NOVEC
- REI Co-Op
- Marcia & Gary Richter
- Marcella Setness
- Plein Family Foundation
- USDA-NRCS

## NONPROFIT ORGANIZATIONS

- Alliance for the Chesapeake Bay
- American Turkish Friendship Association
- Animal Education and Rescue Organization
- Archaeological Society of Virginia, Massanutten Chapter
- Bull Run Mountains Conservancy
- Chesapeake Bay Landscape Professional
- The Clifton Institute
- Ducks Unlimited - Virginia
- K2C Snake Consultants
- Keep Prince William Beautiful
- Northern Virginia Bird Alliance

## COMMUNITY GROUPS

- AASuccess
- Cub Scout Pack 107
- Dominion Woman's Club
- Eagle Scout Connor Roccograndi & Scout Troop 91
- Eagle Scout Jacob McGonigle & Scout Troop 671
- Girl Scout Troop 90231
- Northern Shenandoah Valley Master Gardeners Association
- Scouting BSA Prince William District Committee
- Shepherd of the Hills Church
- Villages of Piedmont I & II
- Virginia Master Naturalists

- Northern Virginia Conservation Trust
- Old-Growth Forest Network
- Potomac Riverkeeper Network
- Prince William Parks Foundation
- Prince William Soil & Water Conservation District
- Sustainability Matters
- Virginia Bluebird Society
- Virginia Native Plant Society & Prince William Wildflower Society
- Virginia Outdoors Foundation & Bull Run Mountains Natural Area Preserve
- Virginia Grassland Bird Initiative
- Virginia Working Landscapes
- Volunteer Prince William




8040 Industrial Park Court  
Bristow, VA 20136


(571) 358-2098

[info@whfarmfoundation.org](mailto:info@whfarmfoundation.org)

[www.whfarmfoundation.org](http://www.whfarmfoundation.org)

[www.leopoldspreserve.com](http://www.leopoldspreserve.com)

 [White House Farm Foundation](https://www.facebook.com/WhiteHouseFarmFoundation)  
[Leopold's Preserve](https://www.facebook.com/Leopold'sPreserve)

 [@WHFarmFoundation](https://www.instagram.com/WHFarmFoundation)  
[@LeopoldsPreserve](https://www.instagram.com/LeopoldsPreserve)



WHITE HOUSE  
FARM FOUNDATION

WITH SUPPORT FROM PLEIN FAMILY FOUNDATION

The White House Farm Foundation is a 501(c)(3) nonprofit foundation dedicated to conservation and education.

Our work is supported by the  
**Plein Family Foundation.**